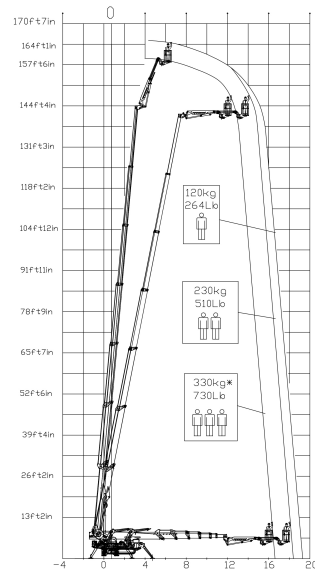
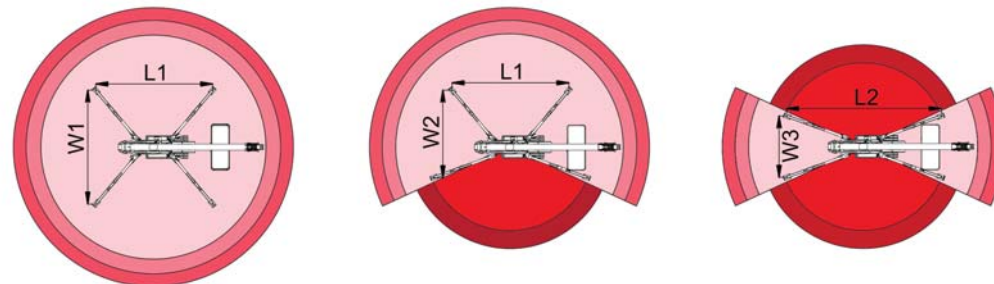
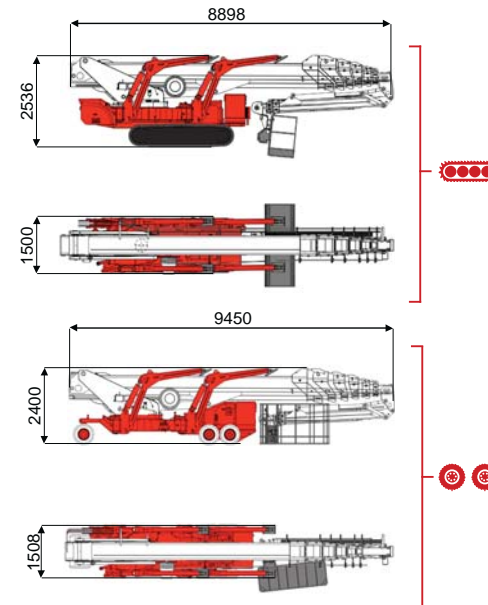




50 m ↑
19,0 m →
*330 Kg 🧑🧑🧑



*330kg为额外选配功能



16500 mm	18500 mm	19000 mm	12000 mm	16000 mm	L1	L2	W1	W2	W3
330 kg	230 kg	120 kg	400 kg	120/230 kg	6250 mm	6946 mm	5000 mm	4500 mm	4000 mm

BI-ENERGY
Diesel+AC



XTJ 50/C	🔋	50 m	19,0 m	*230 kg	170°	660°	180x70 cm	90°+80°	4-5 m	15%	40%	1,5 km/h	13500 kg	95 kN	4,19 kN/m ²	6,55 kN/m ²	1500/1950 mm	8898 mm	2280 mm
XTJ 50/R	🔋🔌	50 m	19,0 m	*230 kg	170°	660°	180x70 cm	90°+80°	4-5 m	15%	25%	1,4 km/h	13000 kg	95 kN	3,90 kN/m ²	6,09 kN/m ²	1508 mm	8898 mm	2108 mm



Battery type



Battery charge



Add. Weight



Autonomy



Charging time

Electropump

ECO	DC+AC	🔋🔌	48V 270 A/h 5h	230V-48V 45A	230kg	6-7 h endless	7h	48V 9 kW
-----	-------	----	----------------	--------------	-------	---------------	----	----------

