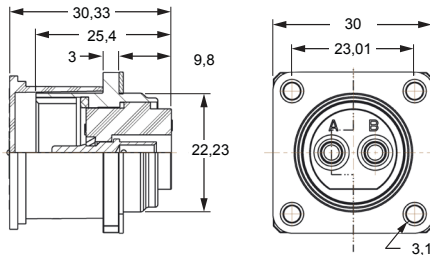


Specifications

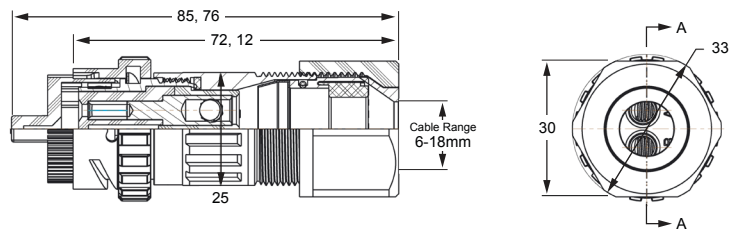
Electrical Rating	2 way 26A / 60V DC	UL1977
	3 way 16A / 250V AC	UL1977
	3 way 16A / 250V AC	IEC 61984 ,60950-22
	3 way 10A / 400V DC	UL1977
	3 way 10A / 400V DC	IEC 61984 ,60950-22
Temperature Rating	-55°C to +105°C	
Contact Termination	Unit Mounted Receptacle Field-Installable Plug	1mm ² – 2.5mm ² 2.5mm ² – 10mm ²
Oversoltage Protection (10/350 μs Lightning Strike)	20kA	
Environmental	Water Ingress	IP67 (when mated)
Mating Sequence	FMLB (First mate / Last Break)	Shell on 2-Way DC / Ground pin on 3-Way AC
PIM (Passive Inter-Modulation)	PIM < -140dBc @ 38dBm	

All measurements are in mm.

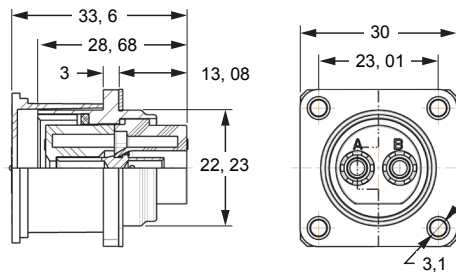
C10-730511-Z2P
2 WAY 48 V DC MALE PANEL RECEPTACLE
IEC61984 & IEC60950-22 Certified



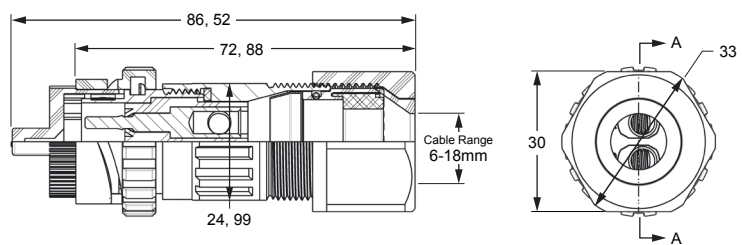
C10-730511-Z2S
2 WAY 48 V DC FEMALE STRAIGHT PLUG
IEC61984 & IEC60950-22 Certified



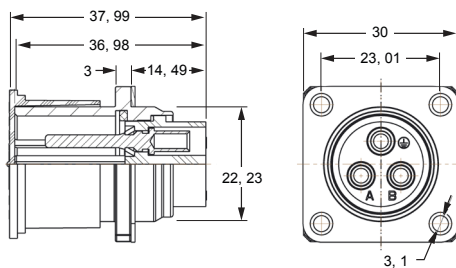
C10-730512-Z2S
2 WAY 48 VDC FEMALE PANEL RECEPTACLE
IEC61984 & IEC60950-22 Certified



C10-730512-Z2P
2 WAY 48 VDC MALE STRAIGHT PLUG
IEC61984 & IEC60950-22 Certified



C10-730513-Z3P
3 WAY 400VDC/250V AC MALE PANEL RECEPTACLE
IEC61984 & IEC60950-22 Certified



C10-730513-Z3S
3 WAY 400VDC/250V AC STRAIGHT PLUG
IEC61984 & IEC60950-22 Certified

