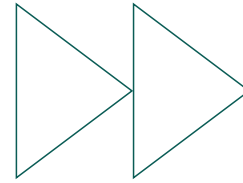




深圳市铁美高自动化设备厂  
Shenzhen Tiemeigao Automation Equipment Factory

地址：深圳市宝安区沙井街道后亭  
宝安大道旁学子围工业园A栋一楼北  
电话：400-6628-663  
传真：0755-3388-0961  
网址：www.tmgd.com



冲压自动化专家  
**STAMPING**  
AUTOMATION EXPERT

深圳市铁美高自动化设备厂  
Shenzhen Tiemeigao Automation Equipment Factory





铁美高自动化设备厂专业生产自动化冲压设备及冲床周边配套设备，是一家集研发、设计、生产、销售、维修为一体的国际化精密冲压自动化设备制造企业。凭借先进的技术设备和管理经验，产品性能稳定，自动化配套齐全。拥有和众多知名企业超过多年的合作经验，为广大用户提供量身定制的产品和服务，以始终满足客户需求为目标，不断提供各行业专业化解决方案。专注前沿科技，力求领先，精益求精，不断努力。

#### 是一家具有专利技术的小型冲床生产厂家

铁美高小型气动冲床、小型伺服冲床都荣获国家专利的小型冲压设备。小型气动冲床具有经典的外观设计，先进的德国制造技术，智能的可拓展型人机界面数字化系统，人性化及便捷的调模装置，安全可靠的离合刹车系统，精密的多圆柱体导向系统，高效节能的生产力可与各类自动化生产线完美结合。伺服冲床更是以伺服马达作为直接的动力来源，通过螺杆、曲柄连杆及肘杆等方式，将马达产生的驱动力转化为滑块的直线运动，运用伺服马达可编程化控制的特性，完美的控制滑块的运动形式，以满足冲压加工多样及智能等需求，具有滑块速度可控、难成形材料易制性、节能环保、一机多用及智能化等优势，是目前公认的第三代冲床，是冲压行业发展的主流趋势。

小型气动冲床专利：  
中国外观专利号：ZL 201530171645.7  
中国实用新型专利号：ZL 201520368970.7

小型伺服冲床专利：  
中国外观专利号：ZL 201730359902.9  
中国实用新型专利号：ZL 201720988558.4

#### 精密模切冲压领域的专家

铁美高模切冲床（模切机）、小型气动冲床适用于精密电子、电器的金属与非金属部件的冲压成形、压铆以及自动化生产线的冲压领域。伺服冲床应用于高精密度金属部件的冲压形领域。

引进先进的德国制造技术，采用进口零部件，完善的质量监督体系，我们不断向更新、更难挑战，依靠雄厚的制造技术能力，开发出兼具安全和高性能、高可靠性的冲床。德国技术一直被制造业奉为典范，铁美高一直以高标准来严格要求，我们开发出的冲床不仅在设计技术上，而且在加工技术、组装技术等生产的全方位进行了严格的质量管理，进而实现精品化。

#### 冲压自动化方案设计厂家

铁美高作为一个资深自动化设备厂家，将重点放在自动化的生产效率和质量成熟稳定上。配套周边自动化有：机械手，冲床数控送料机，绞正机，放料机，复合机，切片机及其他非标冲压自动化。针对各类卷料、张料、片料、印刷后冲压等材料实现自动化送料冲压，提高效率，改变传统。

Tiemeigao Automation Equipment Factory specializes in the production of automatic stamping equipment and punch peripheral equipment, is a research and development, design, production, sales, maintenance as one of the international precision stamping automation equipment manufacturing enterprises. With advanced technology and equipment and management experience, the product has stable performance and complete automation. With more than years of cooperation experience with many well-known enterprises, we provide customized products and services for the vast number of users to always meet customer needs as the goal, and constantly provide professional solutions in various industries. Focus on cutting-edge technology, strive to lead, strive for excellence and make continuous efforts.

It is a small punch manufacturer with patent technology.

The iron and small high pneumatic punching machine and small servo punching machine have all won the national patent small punching equipment. Small pneumatic punch with classic appearance design, advanced German manufacturing technology, intelligent and expandable human-machine interface digital system, humanized and convenient adjusting device, safe and reliable clutch brake system, precision multi-cylinder guiding system, high efficiency and energy-saving productivity can be perfect with all kinds of automatic production lines. Combination, Servo punching machine takes the servo motor as the direct power source. By means of screw, crank connecting rod and elbow rod, the driving force produced by the motor is transformed into the linear motion of the slider. By using the programmable control characteristics of the servo motor, the movement form of the slider is perfectly controlled to satisfy the various and intelligent stamping processes. Demand, with the slider speed controllable, difficult to form material manufacturability, energy-saving and environmental protection, one machine multi-purpose and intelligent advantages, is recognized as the third generation punch, is the

mainstream trend of stamping industry development. Patents for small pneumatic punching machines: China appearance patent No. ZL 201530171645.7, China utility model patent No.: ZL 201520368970.7 Small servo punch patents: China appearance patent No. ZL 201730359902.9, China utility model patent No.: ZL 201720988558.4

Expert in precision die cutting and stamping

Tiemeigao die cutting punch (die cutting machine), small pneumatic punch for precision electronics, electrical and metal and non-metal parts stamping, riveting and automatic production line stamping field. Servo punching machine is applied to the stamping field of high precision metal parts. The introduction of advanced German manufacturing technology, the use of imported parts, improve the quality supervision system, we are constantly updating, more difficult challenges, relying on strong manufacturing technology capabilities, developed a safe and high-performance, high reliability punch. German technology has been regarded as a model by the manufacturing industry, Tiemeco has been strict with high standards, we developed punch not only in the design technology, but also in the processing technology, assembly technology and other production of all-round strict quality management, and then to achieve quality.

Stamping automation program design manufacturer

As a senior automation equipment manufacturer, Tiemeigao focuses on automation production efficiency and quality maturity and stability. Matching peripheral automation are: manipulator, punch NC feeder, strander, feeder, compound machine, slicer and other non-standard stamping automation. Aiming at all kinds of coil, sheeting, sheeting, stamping after printing and other materials to achieve automatic feeding stamping, improve efficiency, change the tradition.

# CUSTOMER CASE

## 客户案例

# COMPANY CERTIFICATE 企业证书



比亚迪  
BYD Auto Parts Production



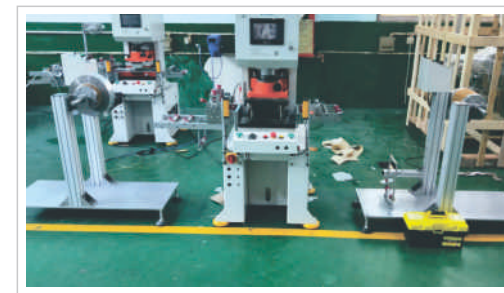
华为  
HUAWEI Mobile Accessories Production



wellaid 维力  
Wellit Medical Products Production



东风汽车  
Dongfeng Automobile Parts Production



GREE 格力  
GREE Air Conditioning Accessories Production



苹果  
Apple Mobile Accessories Production



OPPO  
OPPO Mobile Phone Accessories Production

# INTELLIGENT SERVO PUNCHING MACHINE SERIES

## 智能伺服冲床系列

标准配置表 Standard Configuration Table
伺服电机 Servo motor
触摸屏 Touch screen
模高指示器 Die height indicator
角度信号输出口 Angle signal output port
循环供油器 Circulating oil feeder
调机工具 Machine tool
工具箱 Hold-all
防震脚 Shockproof foot

可选配置表 Optional Configuration Table
供气系统及接头 Gas supply system and fittings
电源扦头 Power cuttage
红外线保护装置 Infrared protection device
照明灯 Floodlight
脚踏供控制开关 Pedal control switch
一体式左右机械手 Integrated left and right manipulator
一体式数控送料装置 Integrated numerical control feeding device
冲压自动化周边设备 Stamping automation peripheral equipment



斜侧面 Oblique Side

正侧面 Positive Side



屏幕 Screen

<b>伺服冲床加工</b> Servo punch machining	<p>冲切噪音低, 切面光滑, 产品尺寸精准。 The cutting noise is low, the section is smooth, and the product size is precise.</p>	工序1 Process1 工序2 Process3 工序3 Process3	<p>工序少, 无褶皱 Process is less, no wrinkle.</p>	<p>拉伸成型率高, 工序少 The forming rate is high and the process is few.</p>
<b>传统冲床加工</b> Traditional punch processing	<p>噪音大, 毛刺大, 尺寸有误差。 The noise is large, burrs are large, and the size is error.</p>	工序1 Process1 工序2 Process2 工序3 Process3 工序4 Process4 工序5 Process5 工序6 Process6 工序7 Process7	<p>工序多, 褶皱大 Many processes and large wrinkles.</p>	<p>拉伸成型率低(有爆裂现象), 多道工序 Tensile forming rate is low (bursting phenomenon), multi process.</p>

### 机床性能对比表 Machine tool performance comparison table

一般冲床、油压机 General punch press and hydraulic press	VS	智能伺服冲床 Intelligent servo punch press
<b>质量效率</b> Quality efficiency	<b>质量效率</b> Quality efficiency	根据产品特点, 制定出高质、高效冲压模式(包括: 曲轴、钟摆、拉伸、保压、震动、自由等)。According to the characteristics of the product, a high quality and efficient stamping mode (including: crankshaft, pendulum, stretchingholding pressure, vibration, freedom, etc.) is worked out.
<b>实用功能</b> Practical function	<b>实用功能</b> Practical function	触屏控制, 操作简单。(例: 冲板可变更行程, 一键死点装卸模具, 过载返回, 模具记忆等功能) Touch screen control, simple operation. (example: punching plate variable stroke, one key dead point loading and unloading mold, overload return, mold memory function)
<b>压力变化</b> Pressure change	<b>压力变化</b> Pressure change	任意速度都可以启动冲压; 冲压速度大小的变化对冲压力度影响很少。Stamping can be started at any speed, and the change of stamping speed has little effect on punching strength.
<b>模具寿命</b> Die life	<b>模具寿命</b> Die life	通过调整冲压模式和曲线变化, 可减低对模具冲击力, 直接提高模具寿命及产品质量, 并且减低冲压噪音。By adjusting the stamping mode and curve change, the impact force on the die can be reduced, the die life and product quality can be improved directly, and the stamping noise can be reduced.
<b>结构精度</b> Structural accuracy	<b>结构精度</b> Structural accuracy	冲板采用上推式三圆柱, 曲轴采用滚子轴配合, 使冲压稳定性和精度更高。两后柱空间更大, 实用性好。The punching plate adopts the push-up three-cylinder guide column, and the crankshaft adopts the roller shaft to cooperate, which makes the stamping stability and precision higher. Two the post column space is bigger and the practicability is good.
<b>外观安全</b> Appearance safety	<b>外观安全</b> Appearance safety	零件采用隐藏式设计, 外观整洁, 为加装自动化设备提供了空间, 软硬件兼容性好。The parts are designed in a concealed way with a neat appearance, which provides space for the installation of automation equipment and has good compatibility between hardware and software.
<b>保养维护</b> Maintenance and maintenance	<b>保养维护</b> Maintenance and maintenance	全循环油保养系统, 整洁免操作, 整机零件模块化设计, 维护及维修简单。Full cycle oil maintenance system, clean and free operation, modular design of whole machine parts, simple maintenance and repair.
<b>节能环保</b> Energy saving and environmental protection	<b>节能环保</b> Energy saving and environmental protection	全电推进, 而且冲压时电机才转动工作, 非常节能, 热效低。All electric propulsion, and stamping when the motor is working, very energy saving, low thermal efficiency.

# SERVO PUNCHING MACHINE SERIES

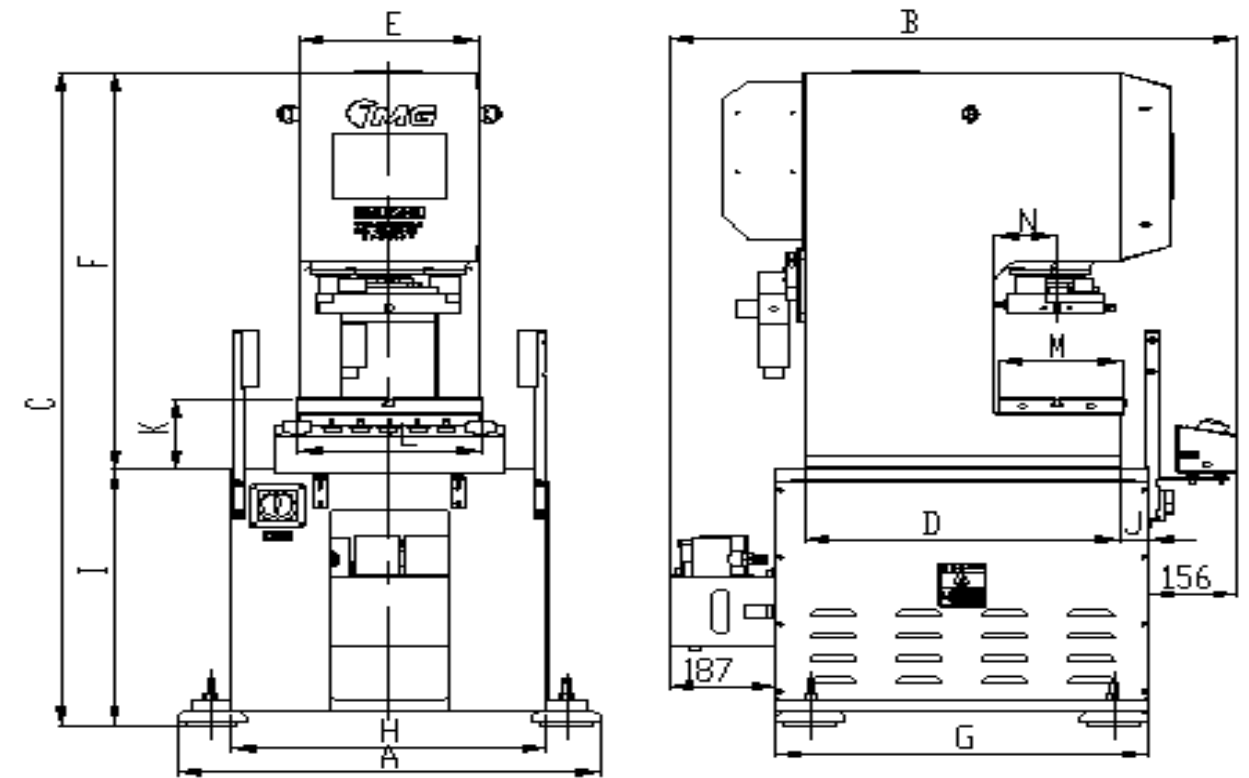
## 伺服冲床系列

伺服冲床系列参数表 Servo punch series parameter list 单位: mm Unit: mm

吨位 Tonnage	S-5T		S-10T		S-15T		S-25T		
	G型 type	D型 type	G型 type	D型 type	G型 type	D型 type	G型 type	D型 type	
曲轴模式 Crankshaft mode	20	40	40	60	45	70	50	80	
冲板行程 Flush plate stroke	330		180	150	150	130	150	120	
冲次/分钟 Times / Minute	330		180	150	150	130	150	120	
钟摆模式 Tick-tock			20	30	23	35	25	40	
冲板行程 Flush plate stroke			250	200	200	170	200	160	
冲次/分钟 Times / Minute			250	200	200	170	200	160	
最大模高 Maximum modulus height	170	150	190	170	215	190	230	200	
调节量 Regulation quantity	25		25		30		35		
吊装模孔 Hoisting mold hole	2—φ11*220		2—φ13*235		2—φ15*260		2—φ17*365		
模柄尺寸 Die size	φ25*50		φ25*50		φ30*55		φ40*55		
模板中心到床身 Template center to bed	110		125		140		160		
床身两柱间距离 Distance between two columns of bed	165		190		220		270		
上工作台尺寸mm Upper workbench dimensions	250*170		266*186		312*212		430*290		
下工作台尺寸mm Lower worktable size	325*220*35		370*258*40		430*293*45		580*362*55		
落料孔尺寸mm Blanking hole size	100*60		120*80		150*100		180*120		
机重量 (kg) Machine weight	800		1200		1800		3200		
上床身尺寸 Bed size	550*315*882		680*360*1052		800*420*1233		1050*560*1547		
下底座尺寸 Lower base size	650*550*575		750*650*583		850*700*543		1100*850*535		
电机功率 (KW) Motor power	2.3 ~ 3.8		3 ~ 4.3		4.3 ~ 5.5		7.5 ~ 10		
操作/动作/润滑 Operation / action / lubrication	双手按动 / 曲轴、钟摆、拉伸、保压 / 循环油冷却 Double press / crankshaft, pendulum, stretching, retaining and circulating oil cooling								
输出信号 output signal	4个								

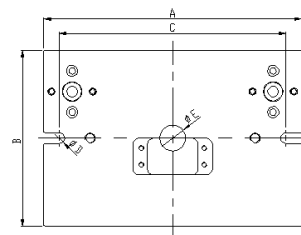
床身参数表及示意图 Bed parameter table and schematic diagram

型号 Model	S-5T	S-10T	S-15T	S-25T
A	740	880	925	1115
B	992	1092	1217	1467
C	1457	1635	1776	2082
D	550	680	800	1050
E	315	360	420	560
F	882	1052	1233	1547
G	650	750	850	1100
H	550	650	700	850
I	575	583	543	535
J	50	35	25	25
K	155	190	245	295
L	325	370	430	570
M	220	257.5	292	362
N	110	125	140	160



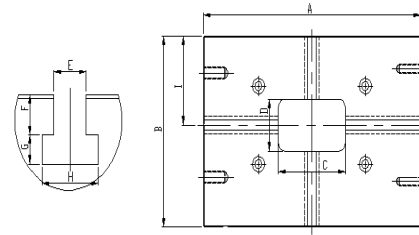
上工作台参数表及示意图  
Upper workbench parameter list and schematic diagram

型号	S-5T	S-10T	S-15T	S-25T
A	250	266	312	430
B	170	186	212	290
C	220	235	260	365
D	11	13	15	17
E	25	25	30	40



下工作台参数表及示意图  
Lower workbench parameter list and schematic diagram

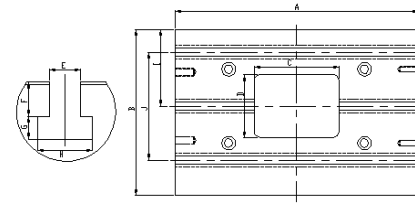
型号	S-5T	S-10T
A	325	370
B	220	257.5
C	100	120
D	60	80
E	12	14
F	11.5	12
G	8.5	9
H	21	24
I	102.5	120



5T-10T

下工作台参数表及示意图  
Lower workbench parameter list and schematic diagram

型号	S-15T	S-25T
A	430	580
B	292	362
C	150	180
D	110	120
E	14	18
F	15	20
G	10	12
H	24	30
I	135	155
J	190	220



15T-25T

# SMALL PRECISION HIGH-SPEED PNEUMATIC PUNCHER

## 小型精密高速气动冲床

### 静音、高速、精密、智能、安全

Mute, high speed, precision, intelligence, safety

气动冲床广泛应用于各类电子、通讯、电脑、家用电器、家具、交通工具（汽车、摩托车、自行车）等非金属及金属零部件冲压成型加工。采用精密多圆柱体导向，压力均衡；配置高灵敏离合器及光栅安全操作；曲轴、齿轮、齿轮轴等摩擦部位均经硬化热处理再研磨精加工，静音冲压压力稳定；智能可拓展型人机界面，操作简单，调模方便；可搭配自动送料、机械手等进行自动化生产，降低成本，提高效率。

Pneumatic punching machine is widely used in various kinds of electronics, communications, computers, household appliances, furniture, vehicles (automobiles, motorcycles, bicycles) and other non-metallic parts stamping processing. Precision multi-cylinder guidance, pressure balance; equipped with high sensitive clutch and grating safe operation; crankshaft, gear, gear shaft and other friction parts are hardened heat treatment and grinding, static stamping pressure is stable; intelligent expandable man-machine interface, simple operation, easy to adjust the mold; can be matched with automatic feeder, gear shaft, etc. Manipulator and other automated production, reduce costs and improve efficiency.



屏幕 Screen



右侧面 Right side

左侧面 Left side



气动高速冲床参数表 Parameter table of pneumatic high speed punch press

单位：mm Unit: mm

吨位 Tonnage	6T		10T		18T		
型号 Model	QG-6	QD-6	QG-10	QD-10	QG-18	QD-18	
360° 曲轴模式 360 degree crankshaft mode	冲板行程 Flush plate stroke	20	30	20	30	20	30
	冲次/分钟 Times / minute	300 ~ 600		300 ~ 600		300 ~ 600	
最大模高 Maximum modulus height	170	165	205	200	215	210	
调节量 Regulation quantity	30		30		30		
吊模安装孔 Mounting hole for hanging mould	2—φ11*220		2—φ13*235		2—φ15*263		
下工作台尺寸 Lower worktable size	375*220*35		410*268*40		600*300*50		
落料孔尺寸 Blanking hole size	100*60		150*80		250*120		
机重量 (kg) Machine weight	800		1500		2200		
机身尺寸 Fuselage size	1450*720*520		2100*820*790		2200*900*915		
电机功率KW Motor power	1.5		2.2		3		
操作/动作/润滑 Operation / action / lubrication	双手按动 / 曲轴 / 循环油冷却 Double press / crankshaft / circulating oil cooling						
输出信号 Output signal	4个						

#### 标准配置表 Standard Configuration Table

变频器 Frequency converter
供气系统及接头 Gas supply system and fittings
触摸屏 Touch screen
电子凸轮 Die height indicator
角度信号输出口 Angle signal output port
循环供油器 Circulating oil feeder
调机工具 Machine tool
工具箱 Hold-all
防震脚 Shockproof foot

#### 可选配置表 Optional Configuration Table

电源扦头 Power cuttage
红外线保护装置 Infrared protection device
照明灯 Floodlight
脚踏控制开关 Footswitches
一体式数控送料装置 Integrated numerical control feeding device
冲压自动化周边设备 Stamping automation peripheral equipment

# AUTOMATIC STAMPING MACHINE

## 冲压自动化一体机

### 产品特点 Product Features

优于传统冲床与冲压周边设备的相应配套。传统要多屏控制，多电路、气路、电箱等部件连接，这样会造成难操作，零件多，稳定性差，体积大，难维修，并且多公司设备及工艺相互配合等实际问题。

It is superior to traditional punch press and stamping peripheral equipment. Traditional multi screen control, multi circuit, gas circuit, electric box and other components. This will cause difficult operation, many parts and poor stability. It is too big to repair, and many companies cooperate with each other. And other practical problems.

### 左右机械手一体化

(可根据客户产品工艺定制)

Integration of left and right manipulator (customized according to customer product process)



### 模切、保压、光电、复合、排废、切片一体机

Die cutting, pressure maintaining, photoelectric, compound, discarding and slicing integrated machine



### 二次套位冲压生产线 Two sets of stamping production line



针对卷状材料（金属或非金属）二次套位冲压成型  
Stamping forming of coil material (metal or non-metal) two times.

### 片材自动上料冲压生产线 Sheet automatic feeding and stamping production line



针对片状材料（金属或非金属）进行全自动连续冲压成型  
For sheet materials (metals or nonmetals)  
Automatic continuous stamping forming.

### 片材自动上料冲压生产线 Fully automatic drawing and punching production line

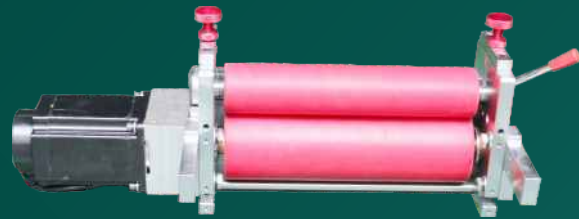


针对卷状材料金属拉伸或非金属凸包进行自动化作业  
Automatic operation of metal drawing or non-metallic convex hull for coil material

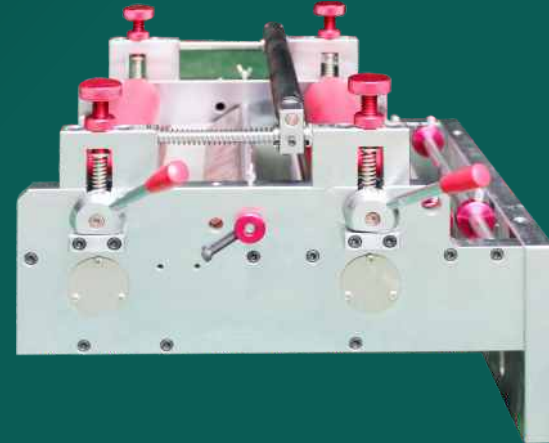
# STAMPING PERIPHERAL EQUIPMENT

## 冲压周边设备-送料器系列

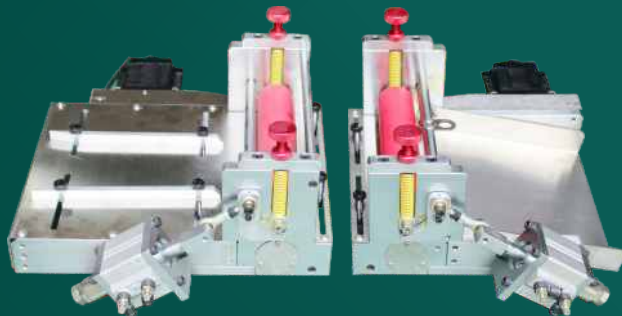
数控电脑送料器M2  
CNC computer feeder M2



数控电脑双送料器M3  
CNC double feeder M3



片材双头送料器P1  
Sheet dual head feeder P1



数控高速金属送料器G3  
CNC high speed metal feeder G3



送料器参数表 Feeder parameter table

型号Model	进料宽度Feed width	送料距离Feed distance	送料速度Feed speed	
M2	230 ~ 350	0-999	150 ~ 300次/分钟Second / minute	与冲床一体式电箱 或分体 ( 可选 ) Integrated electric box with punch pressOr split (optional)
M3	230 ~ 350	0-999	150 ~ 300次/分钟Second / minute	
P1	200 ~ 300	0-999	150 ~ 300次/分钟Second / minute	
G3	100 ~ 200	0-999	500次/分钟Second / minute	

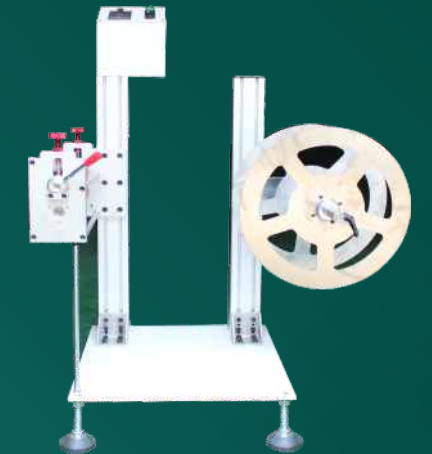
# STAMPING PERIPHERAL EQUIPMENT

## 冲压周边设备-复合放料机系列

电感应放料机F6A  
Electric induction discharging  
machine F6A



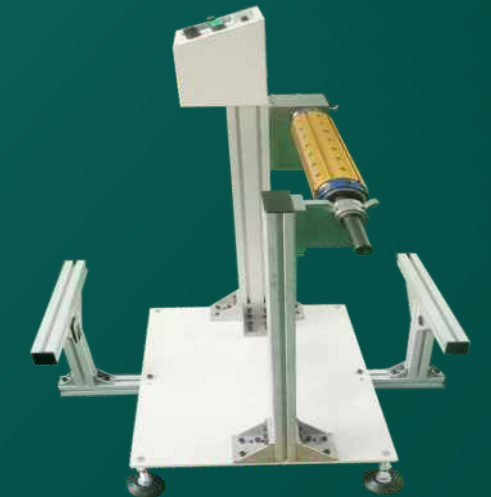
滚筒拉料式光电放料机F6B  
Roller drawing photoelectric discharge  
machine F6B



简易双层复合放料机F4  
Simple double layer compound  
discharge machine F4



双臂放料机  
Two arm discharge machine



复合放料机参数表 Parameter table of compound discharge machine

型号Model	复合放料宽度Compound width	复合放料速度Compound discharging speed	
F6A	350/450/600	30米/分钟	光电对射式可用于 透明材料。 复合放料机宽度 超出350宽度为双臂式 The photoelectric pair can be used. Transparent material.Width of compound discharging machineOver 350 width for double arm type.
F6B	350/450/600	30米/分钟	
F4	350/450/600	30米/分钟	



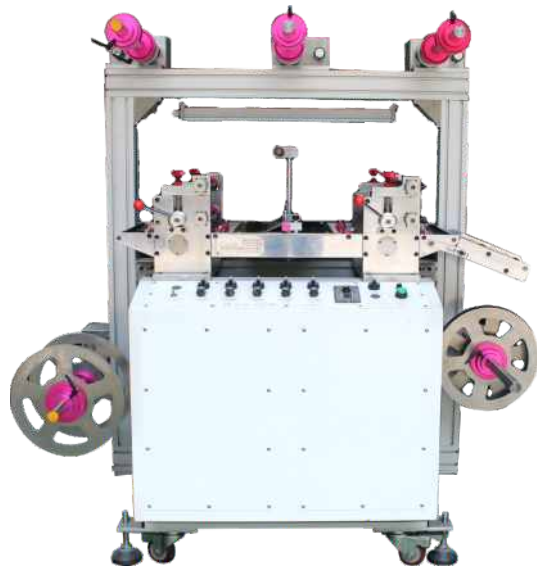
# STAMPING PERIPHERAL EQUIPMENT

## 冲压周边设备-切片机/上料机系列

# Gj10 ULTRA PRECISION STRAIGHTENING MACHINE

## GJ10 超精密矫正机

双座复合机F350B  
Two seat compound machine F350B



光电定位切片机Q350  
Photoelectric positioning slicing machine Q350



金属上料机  
Metal feeder



片卷两用复合机F350B  
F350B for film roll dual purpose machine



### 产品特点 Product features

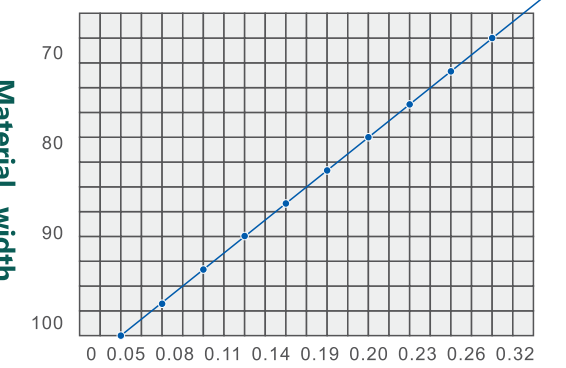
- ◆ 适用料厚0.05~0.3mm宽度0~200mm的材料。
- ◆ 多轴万向节转动，自动给油润滑。
- ◆ 配有补强装置，四点独立式调整（采用日本三丰百分表）。
- ◆ 实现高平坦度。
- ◆ 采用变频器调速，高效准确。
- ◆ 可选用掀开式结构，使用滚筒清洗。
- Applicable material thickness 0.05~0.3mm width 0~200mm material.
- Suitable for multi axis gimbal rotation, automatic oil lubrication.
- Equipped with a reinforcing device, four independent adjustment.
- To achieve a high degree of flatness.
- Adopts frequency conversion speed regulating, accurate and efficient.
- Can choose the open structure, the use of roller cleaning.



### GJ10 产品规格 GJ10 product specifications

项目 Item	GJ10-100	GJ10-200
最大宽度(mm) Maximum width	100	200
最大厚度(mm) Maximum thickness	0.05-0.3	0.05-0.3
马达HP Maximum thickness (mm)	1	1
减速机 Reducer	1: 30	1: 30
电源 Power Supply	Ac三相380 AC three phase 380	Ac三相380 AC three phase 380
矫正滚轮数 Number of corrected rollers	ø10x9 ø10x10	ø10x9 ø10x10
调整方式 Arrange mode	4点微调 4 point fine tune	4点微调 4 point fine tune
调整方式 Arrange mode	变频调速 frequency control	变频调速 frequency control
机械尺寸长*宽*高(mm) Mechanical dimensions	700x600x1050	700x700x1050

材料宽度  
Material width



材料厚度 Material thickness

# YTE ELECTRONIC DISK FEEDER

## YTE 平面电子送料机



### 产品特点 Product features

- 采用变频器送料。
- 卷料积材可重叠放置，减少填料次数，节省换料时间。
- 承载量大（500kg-2000kg），可配合规格选用。
- 操作简易，结构坚固，配合高速冲床更能发挥其特长。
- 载重500kg，钢板厚度8mm；载重1000kg以上，底板厚度12mm，盖板厚10mm。
- 电器：台达变频器、台安交流接触器、欧龙姆中间继电器、台湾追踪器。
- Use inverter to feed.
- The stacking material can be overlapped to reduce the number of fillers and save the time of refueling.
- The load capacity is large (500kg-2000kg), which can be matched with specifications.
- The operation is simple and the structure is strong. It can play its specialty with high-speed punching machine.
- Load 500kg, steel plate thickness 8mm, load 1000kg above, floor thickness 12mm, cover plate thickness 10mm.
- Electrical appliances: Delta inverter, Taian AC contactor, Olom intermediate relay, Taiwan tracker.

### YTE-1000平面送料机（微动式）规格 Specification for YTE-1000 plane feeder (fretting type)

材料宽度 Material width	120mm
材料厚度 Material thickness	1.0mm
卷料外径 Outer diameter of coiling	1000mm
积载重量 Stacking Weight	500kg
积载高度 Stowage height	500mm
马达 Motor	200W
送料速度 Feed speed	30m/min
送料方向 Feeding direction	左←→右 Left, Right
电源 Power Supply	3相380V AC three phase 380
机台尺寸长*宽*高mm Machine size	127*100*155cm
机械重量 Mechanical weight	150kg

### YTE 平面电子送料机规格 Specification for YTE plane electronic feeding machine

项目 project	YTE-1000	YTE-1010	YTE-1210	YTE-1015	YTE-1215	YTE-1220
材料宽度 Material width	120	120				
材料厚度 Material thickness	10	10				
卷料外径 Outer diameter of coiling	1000	1000	1000	1200	1000	1200
积载重量 Stacking Weight	500	1000	1000	1500	1500	2000
积载高度 Accretion height	500	500				
加长轴马达 Lengthened shaft motor	200W*1个	400W*1个	400W*1个	400W*1个	400W*1个	400W*1个
送料速度 Feed speed	30	30				
送料方向 Feeding direction	左←→右 Left / Right	左←→右 Left / Right				
电源 Power Supply	AC单相 220V AC three phase 220	AC三相380 AC three phase 380				
机台尺寸 Machine size	127*100*155	136*102*155	136*120*155	136*102*155	136*120*155	136*120*170
机械重量 Mechanical weight	150	200	250	300	350	400

# RU LIGHT AUTOMATIC MATERIAL RACK

## RU 轻型自动材料架

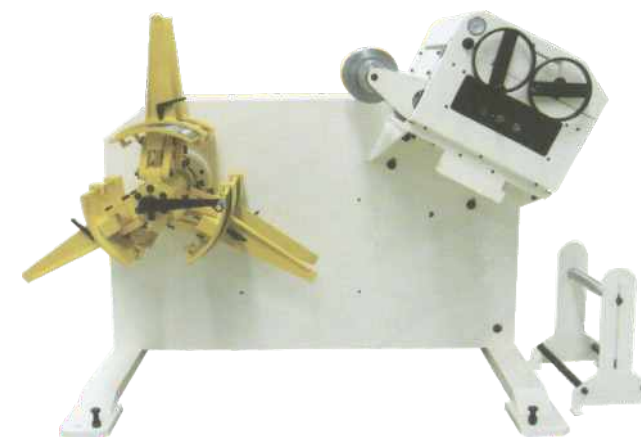


### 产品规格 Product specification

项目 Project	RU-150A	RU-150B
最大材料宽度 Maximum Material Width	150	
料架荷重 Loading Load	100	
卷料内径 Inner Diameter Of Reel	100-420	280-420
卷料外径 Outer Diameter Of Coiling	800	
送料速度 Feed Speed	22 m/min	
扩张方式 Dilatation	手动独立 Manual independence	手摇同步 Hand synchronization
马达 Motor	1/4HP	

# BML UNCOILER & STRAIGHTENER 2 IN 1

## BML 标准料架矫直二合一



### 产品规格 Product specification

项目 Project	BML -150	BML -200	BML -300	BML -400	BML -500	BML -600
最大料宽 Maximum width of material	150	200	300	400	500	600
料架荷重 Loading load	500	1000	1500	2000	2000	3000
整平料厚 Thickness of leveling	0.5-3.2					
卷料内径 Inner diameter of reel	460-540					
卷料外径 Outer diameter of coiling	1200					