

# 全自動在線打印貼標機

Automatic One-Line Print Mouner



APTМ-460



廣東秦泰盛智能化科技有限公司

Guangdong Qin-Tech Intelligent Technology CO.,LTD

秦泰資訊科技·諾可電子·森源水處理

TEL:86-769-81664889 FAX:86-769-85356530

Http://www.qin-tech.com E-mail:salesdg@in-techgroup.com

# 全自動在線打印貼標機

Automatic One-Line Print Mouner

**APTМ-460**

## 功能 Functions:

- ◎適用於SMT行業各種需要貼標籤、背膠、不干膠的線路板  
For label, adhesive back plate, sticker applications in SMT industry
- ◎提高SMT線上貼標機產能  
Greatly improve labeling throughput in SMT industry
- ◎大幅減少操作人員貼標錯誤率  
Reduce human error dramatically
- ◎使SMT生產線更加流暢、更有效率  
Automation and higher efficiency

**高速度:最快可達 2000片/時**  
**High Speed:** Max 2000 pcs/hour

**高精度:上下兩組高精視覺對位元**  
**High Precision:** 2 machine vision modules at the top and bottom

**靈活:可選務對中、一次對中、兩次對中等模式**  
**Flexible:** Optional corrosive medium, one or two to medium model

**適應性廣:適合各種高速、高精標籤及背膠的應用**  
**Wide Adaptability:** for any kinds of label



## 特點 Characteristics:

### ★ 高效率, 高精度貼標籤貼

#### High speed and high accuracy labeling

全視覺定位貼裝系統由兩個高分辨率CCD和穩定視覺軟件提供,能校正標籤同線路板Fiducial Mark的X、Y和U方向的誤差。

2 machine vision modules compensate label and fiducial marks' X, Y, U offset

### ★ 穩定性高, 應用靈活

#### High stability

高剛性底座,松下伺服馬達和NSK(或THK、IKO)高精度絲杆導軌驅動X-Y軸,U軸可以0-360°任意角度,更加靈活貼標籤。

High stiffness structure, Panasonic servo motors, high accuracy rail/spindle secure system stability. U axis can adjust 0-360 degree.

### ★ 穩定可靠的工業控制系統

#### Stable controller and flexible software system

基於Windows操作系統平臺,具有多等級操作界面和CCD輔助簡化式編程方法,提供用戶簡易操作界面和更容易設定機器的操作程序。可單板和拼板貼付也具有SKIP功能。

With Windows PC software, user friendly software interface. It can handle sub PCB, PCB with skip functions.

### ★ 標準的SEMA接口的運輸軌道,寬度可自動調節

#### Standard SEMA interface

軌道可設定BYPASS功能,操作更具有彈性;夾板採用上頂式設計,防止線路板彎曲。

Adjustable conveyor with warpage compensation table.

### ★ 可拆卸Feeder, 標準Feeder安裝方式, 更換容易

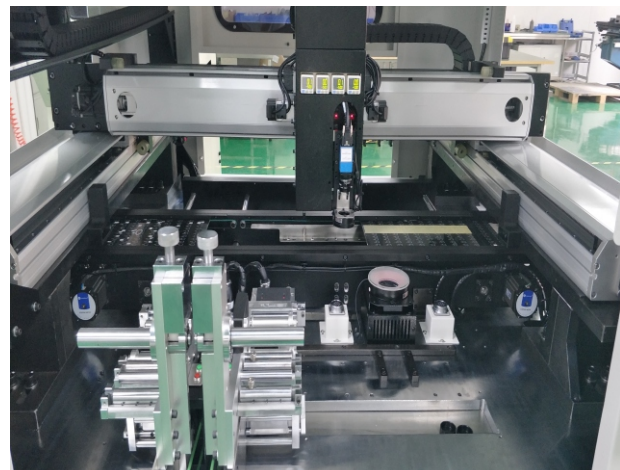
#### Flexible label feeder installation and quick change

標籤Feeder由光纖和步進馬達控制,出標精度高;Feeder上料操作簡單,更換容易。可根據客戶產品規格制定各種標籤送料器。General label feeder for different applications and dedicated feeder can be used with step motor and sensor control. Quick change. Dedicated feeder can be tailor make.

### ★ APTM-460 配斑馬打印機(105SL PULS) 在線打印適應客戶高速生產線 APTМ-460 Zebra Printer (105SL PULS) OnLinePrinting, adapt to customer high-speed production line

上下位機層疊式收板可選。

Upper and lower computer stacked board optional



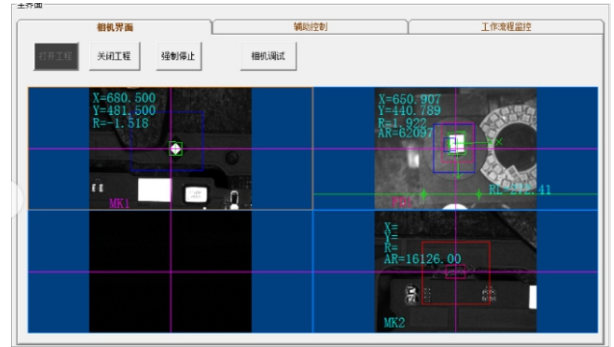
# 全自動在線打印貼標機

Automatic One-Line Print Mouner

**APTМ-460**

## 軟件功能 Software Function:

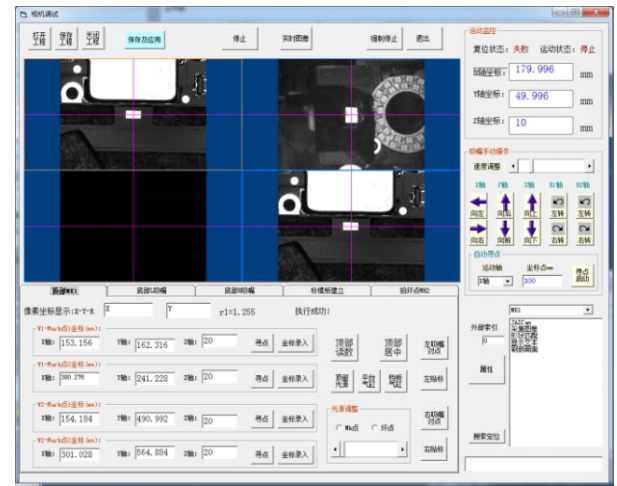
- ◎ 壞板Skip Broken Board Skip
- ◎ 支持高精度2次對位 Support high-precision alignment twice
- ◎ 標籤檢測 Label Detection
- ◎ 二維碼檢測 Qr Code detection
- ◎ 不良標籤拋料 Bad label material
- ◎ 壞點檢測 Bad Point Detection
- ◎ 可用Excel表格導入座標 Can Import Coordinates by Excel



## 軟件界面 Software Interface:

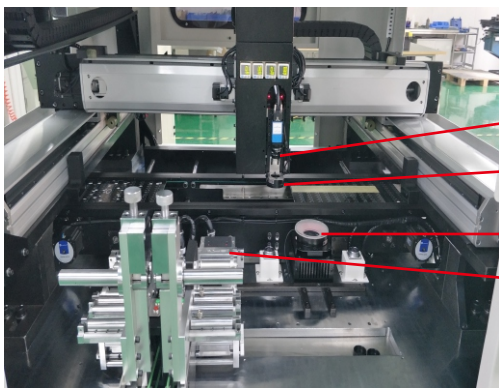


序号	标签(L/2)	吸嘴(O/2)	X轴坐标	Y轴坐标	Z轴坐标	旋转角度	坏点	坏点X	坏点Y
1	1	0	219.75	167.2	4.7	91.5	1	203.196	151.564
2	1	0	285.45	166.75	4.9	91.5	2	270.116	150.3
3	1	0	187.9	218.5	4.55	-89	3	203.9	235.128
4	1	0	254.7	218.1	4.9	-89	4	271.2	233.808
5									



## 主要部件分解

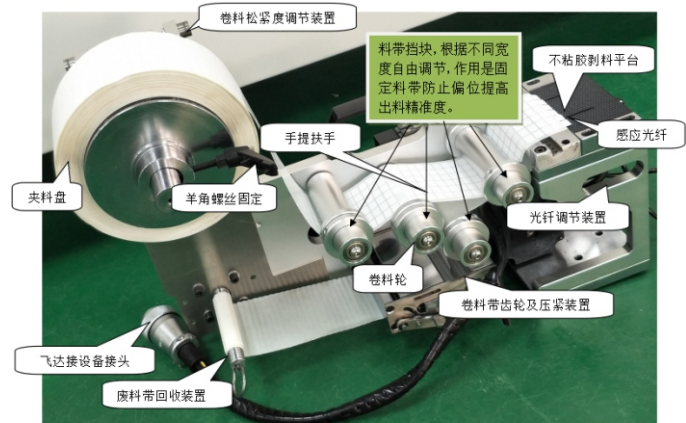
## Decomposition of Main components:



- ① 頭部相機: 通過兩個Mark點, 糾偏貼合點位  
Top Camera: Mark through two points, correcting fit point
- ② 吸標頭吸附標籤  
Suction Header: adsorption tags
- ③ 底部相機: 糾偏物料X/Y方向以及貼合角度  
The bottom of the camera: Corrective material X / Y direction and the lamination angle
- ④ 四組背膠 Feeder Two table feeder

## 可定制Feeder Custozied Feeder:

- ◎ 出標速度(Labeling Speed ):100~500 mm/min
- ◎ 出標精度(Labeling Accuracy):<0.2 mm
- ◎ 標籤範圍寬度(Labeling Size):L2mm\*W2mm-L30mm\*W55mm
- ◎ 標籤和標籤之間間隙最小(Minimum clearance between labels):1mm
- ◎ 底紙最大寬度: 70mm
- ◎ 標籤筒直徑(Label tube diameter):80mm



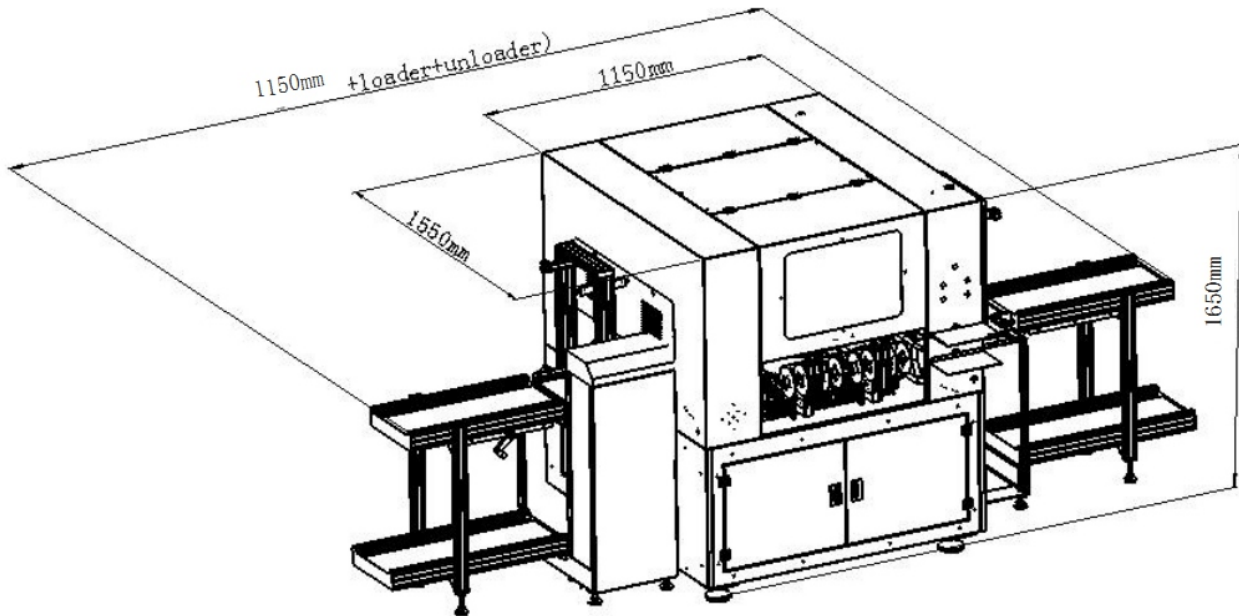


# 全自動在線打印貼標機

## APTМ-460

Automatic One-Line Print Mouner

### 設備尺寸圖 Machine Dimension Diagram:



型號 (Model)	APTМ-460
貼裝速度 (Labeling Speed )	Max:2000 pcs/hour (Dual Head)
X-Y軸重複精度 (Repeatability)	± 0.1mm
Z軸定位精度 (positioning accuracy)	± 0.1mm
R軸定位精度 (positioning accuracy)	± 0.01°
線路板尺寸 (PCB Size W*L)	Max:460mm*530mm Min:50mm*50mm
線路板厚度 (PCB Thickness)	0.5~3.0mm
標籤尺寸 (Label Size)	Max:35mm*35mm Min:2mm*2mm
Z軸行程 (Range)	25mm
U轉角範圍 (Range)	0~360°
傳送軌道 (Transfer Orbit)	兩段式標準SMT軌道 Three Section standard SMT track 軌道寬度自動調節 Orbit Width Adjusted Automatically 單條軌道 One track
	軌道高度 (Orbit Height) 920mm±20mm
料架容量 (Label Feeder Capacity)	4pcs
電壓 (Voltage)	(220AC±10%) 50Hz
所需起源壓力 (Air Source)	>0.6Mpa
氣流量 (Air Traffic)	>60L/min
電源功率 (Power)	3.2KW
主機結構尺寸 (Dimensions L*W*H)	1450*1570*1580mm
重量 (Weight)	800KG
特殊配置 (Configuration Features)	可任意在單片板或多拼板上多標貼附 multi-label attached on different board
	可選配條碼自動識別系統 Optional barcode automatic identification
	可選直通運行功能 Optional straight run function
	標準SMEMA介面 Standard SMEMA Port
	MES系統對接功能 Docking function of MES system